



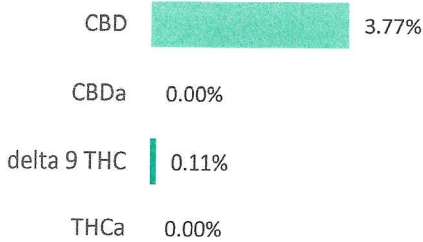
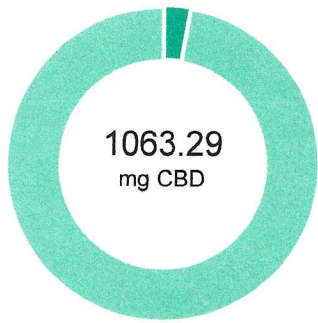
prepared for: CBD Health Collection

136 N Prospect Street
Granville, OH 43023

1000MG Mobility Full Spectrum

Batch ID:	Batch ID#225212367	Test ID:	T000129949
Type:	Unit	Submitted:	03/17/2021 @ 09:11 AM
Test:	Potency	Started:	3/17/2021
Method:	TM14	Reported:	3/18/2021

CANNABINOID PROFILE



Compound	LOQ (mg)	Result (mg)	Result (mg/g)
Delta 9-Tetrahydrocannabinolic acid (THCA-A)	4.45	ND	ND
Delta 9-Tetrahydrocannabinol (Delta 9THC)	5.02	30.22	1.1
Cannabidiolic acid (CBDA)	4.04	ND	ND
Cannabidiol (CBD)	3.94	1063.29	37.7
Delta 8-Tetrahydrocannabinol (Delta 8THC)	5.53	ND	ND
Cannabinolic Acid (CBNA)	3.17	ND	ND
Cannabinol (CBN)	1.45	1.99	0.1
Cannabigerolic acid (CBGA)	4.64	ND	ND
Cannabigerol (CBG)	1.11	32.26	1.1
Tetrahydrocannabivarinic Acid (THCVA)	3.92	ND	ND
Tetrahydrocannabivarin (THCV)	1.01	ND	ND
Cannabidivarinic Acid (CBDVA)	1.69	ND	ND
Cannabidivarin (CBDV)	0.93	12.08	0.4
Cannabichromenic Acid (CBCA)	1.79	ND	ND
Cannabichromene (CBC)	1.95	ND	ND
Total Cannabinoids		1139.84	40.4
Total Potential THC**		30.22	1.1
Total Potential CBD**		1063.29	37.7

NOTES:

of Servings = 1, Sample Weight=28.18g

% = % (w/w) = Percent (Weight of Analyte / Weight of Product)

* Total Cannabinoids result reflects the absolute sum of all cannabinoids detected.

** Total Potential THC/CBD is calculated using the following formulas to take into account the loss of a carboxyl group during decarboxylation step.

Total THC = THC + (THCa *(0.877)) and

Total CBD = CBD + (CBDa *(0.877))

ND = None Detected (Defined by Dynamic Range of the method)

FINAL APPROVAL

Ryan Weems
18-Mar-2021
4:37 PM

Ben Minton
18-Mar-2021
5:04 PM

PREPARED BY / DATE

APPROVED BY / DATE

Testing results are based solely upon the sample submitted to Botanacor Laboratories, LLC, in the condition it was received. Botanacor Laboratories, LLC warrants that all analytical work is conducted professionally in accordance with all applicable standard laboratory practices using validated methods. Data was generated using an unbroken chain of comparison to NIST traceable Reference Standards and Certified Reference Materials. This report may not be reproduced, except in full, without the written approval of Botanacor Laboratories, LLC. ISO/IEC 17025:2005 Accredited A2LA Certificate Number 4329.02



Certificate #4329.02



License No. 800025015
FL License # CMTL-0003
CLIA No. 10D1094068

Certificate of Analysis

Compliance Test

CBD Health Collection
136 N Prospect Street
Granville, OH 43023

Batch # 310212428
Batch Date: 2021-03-10
Extracted From: Hemp

Sampling Method: MSP 7.3.1 Test Reg
State: Florida

Production Facility: Limitless CBD
Production Date: 2021-03-10

Order # LIM210311-020142
Order Date: 2021-03-11
Sample # AAB945

Sampling Date: 2021-03-16
Lab Batch Date: 2021-03-16
Completion Date: 2021-03-22

Initial Gross Weight: 56.889 g

Heavy Metals

Specimen Weight: 249.030 mg

Dilution Factor: 2.000

Analyte	LOQ (ppb)	Action Level (ppb)	Result (ppb)	Analyte	LOQ (ppb)	Action Level (ppb)	Result (ppb)
Arsenic (As)	100	1500	<LOQ	Cadmium (Cd)	100	500	<LOQ
Lead (Pb)	100	500	<LOQ	Mercury (Hg)	100	3000	<LOQ
Total Contaminant Load (TCL) None Detected							

Passed
(ICP-MS)

Mycotoxins

Specimen Weight: 167.400 mg

Dilution Factor: 8.961

Analyte	LOQ (ppb)	Action Level (ppb)	Result (ppb)	Analyte	LOQ (ppb)	Action Level (ppb)	Result (ppb)
Aflatoxin B1	6	20	<LOQ	Aflatoxin B2	6	20	<LOQ
Aflatoxin G1	6	20	<LOQ	Aflatoxin G2	6	20	<LOQ
Ochratoxin A	12	20	<LOQ				

Passed
(LCMS)

Xueli Gao
Xueli Gao
Ph.D., DABT
Lab Toxicologist

Aixia Sun
Aixia Sun
D.H.Sc., M.Sc., B.Sc., MT (AAB)
Lab Director/Principal Scientist



Definitions and Abbreviations used in this report: *Total CBD = CBD + (CBD-A * 0.877), *Total THC = THCA-A * 0.877 + Delta 9 THC, *CBG Total = (CBGA * 0.877) + CBG, *CBN Total = (CBNA * 0.877) + CBN, *Other Cannabinoids Total = CBC + CBDV + THCV + THCV-A, *Total Detected Cannabinoids = CBD Total + CBG Total + CBN Total + THC Total + CBC + CBDV + THCV + THCV-A, *Analyte Details above show the Dry Weight Concentrations unless specified as 12% moisture concentration. (mg/ml) = Milligrams per Milliliter, LOQ = Limit of Quantitation, LOD = Limit of Detection, Dilution = Dilution Factor (ppb) = Parts per Billion, (%) = Percent, (cfu/g) = Colony Forming Unit per Gram (cfu/g) = Colony Forming Unit per Gram, LOD = Limit of Detection, (µg/g) = Microgram per Gram (ppm) = Parts per Million, (ppm) = (µg/g), (aw) = aw (area ratio) = Area Ratio, (mg/Kg) = Milligram per Kilogram, *Measurement of Uncertainty = +/- 5%



This report shall not be reproduced, without written approval, from ACS Laboratory. The results of this report relate only to the material or product analyzed. Test results are confidential unless explicitly waived otherwise. Accredited by a third-party accrediting body as a competent testing laboratory pursuant to ISO/IEC 17025 of the International Organization for Standardization.



License No. 800025015
FL License # CMTL-0003
CLIA No. 10D1094068

Certificate of Analysis

Compliance Test

CBD Health Collection
136 N Prospect Street
Granville, OH 43023

Batch # 310212428
Batch Date: 2021-03-10
Extracted From: Hemp

Sampling Method: MSP 7.3.1 Test Reg
State: Florida

Production Facility: Limitless CBD
Production Date: 2021-03-10

Order # LIM210311-020142
Order Date: 2021-03-11
Sample # AAB945

Sampling Date: 2021-03-16
Lab Batch Date: 2021-03-16
Completion Date: 2021-03-22

Initial Gross Weight: 56.889 g

Pesticides FL V4
Specimen Weight: 167.400 mg
Dilution Factor: 8.961

Passed
(LCMS/GCMS)

Analyte	LOQ (ppb)	Action Level (ppb)	Result (ppb)	Analyte	LOQ (ppb)	Action Level (ppb)	Result (ppb)
Abamectin	28.23	300	<LOQ	Acephate	30	3000	<LOQ
Acequinocyl	48	2000	<LOQ	Acetamiprid	30	3000	<LOQ
Aldicarb	30	100	<LOQ	Azoxystrobin	10	3000	<LOQ
Bifenazate	30	3000	<LOQ	Bifenthrin	30	500	<LOQ
Boscalid	10	3000	<LOQ	Captan	30	3000	<LOQ
Carbaryl	10	500	<LOQ	Carbofuran	10	100	<LOQ
Chlorantraniliprole	10	3000	<LOQ	Chlordane	10	100	<LOQ
Chlorfenapyr	30	100	<LOQ	Chlormequat Chloride	10	3000	<LOQ
Chlorpyrifos	30	100	<LOQ	Clofentezine	30	500	<LOQ
Coumaphos	48	100	<LOQ	Cyfluthrin	30	1000	<LOQ
Cypermethrin	30	1000	<LOQ	Daminozide	30	100	<LOQ
Diazinon	30	200	<LOQ	Dichlorvos	30	100	<LOQ
Dimethoate	30	100	<LOQ	Dimethomorph	48	3000	<LOQ
Ethoprophos	30	100	<LOQ	Etofenprox	30	100	<LOQ
Etoxazole	30	1500	<LOQ	Fenhexamid	10	3000	<LOQ
Fenoxycarb	30	100	<LOQ	Fenpyroximate	30	2000	<LOQ
Fipronil	30	100	<LOQ	Fonicamid	30	2000	<LOQ
Fludioxonil	48	3000	<LOQ	Hexythiazox	30	2000	<LOQ
Imazalil	30	100	<LOQ	Imidacloprid	30	3000	<LOQ
Kresoxim Methyl	30	1000	<LOQ	Malathion	30	2000	<LOQ
Metaxyl	10	3000	<LOQ	Methiocarb	30	100	<LOQ
Methomyl	30	100	<LOQ	methyl-Parathion	10	100	<LOQ
Mevinphos	10	100	<LOQ	Myclobutanil	30	3000	<LOQ
Naled	30	500	<LOQ	Oxamyl	30	500	<LOQ
Paclobutrazol	30	100	<LOQ	Pentachloronitrobenzene	10	200	<LOQ
Permethrin	30	1000	<LOQ	Phosmet	30	200	<LOQ
Piperonylbutoxide	30	3000	<LOQ	Prallethrin	30	400	<LOQ
Propiconazole	30	1000	<LOQ	Propoxur	30	100	<LOQ
Pyrethrins	30	1000	<LOQ	Pyridaben	30	3000	<LOQ
Spinetoram	10	3000	<LOQ	Spinosad	30	3000	<LOQ
Spiromesifen	30	3000	<LOQ	Spirotetramat	30	3000	<LOQ
Spiroxamine	30	100	<LOQ	Tebuconazole	30	1000	<LOQ
Thiacloprid	30	100	<LOQ	Thiamethoxam	30	1000	<LOQ
Trifloxystrobin	30	3000	<LOQ	Total Contaminant Load (TCL)	None Detected		

Xueli Gao
Xueli Gao
Ph.D., DABT
Lab Toxicologist

Aixia Sun
Aixia Sun
D.H.Sc., M.Sc., B.Sc., MT (AAB)
Lab Director/Principal Scientist



Definitions and Abbreviations used in this report: *Total CBD = CBD + (CBD-A * 0.877), *Total THC = THCA-A * 0.877 + Delta 9 THC, *CBG Total = (CBGA * 0.877) + CBG, *CBN Total = (CBNA * 0.877) + CBN, *Other Cannabinoids Total = CBC + CBDV + THCV + THCV-A, *Total Detected Cannabinoids = CBD Total + CBG Total + CBN Total + THC Total + CBC + CBDV + THCV + THCV-A, *Analyte Details above show the Dry Weight Concentrations unless specified as 12% moisture concentration. (mg/ml) = Milligrams per Milliliter, LOQ = Limit of Quantitation, LOD = Limit of Detection, Dilution = Dilution Factor (ppb) = Parts per Billion, (%) = Percent, (cfu/g) = Colony Forming Unit per Gram (cfu/g) = Colony Forming Unit per Gram, LOD = Limit of Detection, (µg/g) = Microgram per Gram (ppm) = Parts per Million, (ppm) = (µg/g), (aw) = aw (area ratio) = Area Ratio, (mg/Kg) = Milligram per Kilogram, *Measurement of Uncertainty = +/- 5%



This report shall not be reproduced, without written approval, from ACS Laboratory. The results of this report relate only to the material or product analyzed. Test results are confidential unless explicitly waived otherwise. Accredited by a third-party accrediting body as a competent testing laboratory pursuant to ISO/IEC 17025 of the International Organization for Standardization.



License No. 800025015
FL License # CMTL-0003
CLIA No. 10D1094068

Certificate of Analysis

Compliance Test

CBD Health Collection
136 N Prospect Street
Granville, OH 43023

Batch # 310212428
Batch Date: 2021-03-10
Extracted From: Hemp

Sampling Method: MSP 7.3.1 Test Reg
State: Florida

Production Facility: Limitless CBD
Production Date: 2021-03-10

Order # LIM210311-020142
Order Date: 2021-03-11
Sample # AAB945

Sampling Date: 2021-03-16
Lab Batch Date: 2021-03-16
Completion Date: 2021-03-22

Initial Gross Weight: 56.889 g



Residual Solvents - FL (CBD)

Specimen Weight: 9.000 mg

Dilution Factor: 1.000

Analyte	LOQ (ppm)	Action Level (ppm)	Result (ppm)	Analyte	LOQ (ppm)	Action Level (ppm)	Result (ppm)
1,1-Dichloroethene	0.16	8	<LOQ	1,2-Dichloroethane	0.04	5	<LOQ
Acetone	2.08	5000	<LOQ	Acetonitrile	1.17	410	<LOQ
Benzene	0.02	2	<LOQ	Butanes	2.5	2000	<LOQ
Chloroform	0.04	60	<LOQ	Ethanol	2.78	5000	<LOQ
Ethyl Acetate	1.11	5000	<LOQ	Ethyl Ether	1.39	5000	<LOQ
Ethylene Oxide	0.1	5	<LOQ	Heptane	1.39	5000	<LOQ
Hexane	1.17	290	<LOQ	Isopropyl alcohol	1.39	500	<LOQ
Methanol	0.69	3000	<LOQ	Methylene chloride	2.43	600	<LOQ
Pentane	2.08	5000	<LOQ	Propane	5.83	2100	<LOQ
Toluene	2.92	890	<LOQ	Total Xylenes	2.92	2170	<LOQ
Trichloroethylene	0.49	80	<LOQ				

Passed
(GCMS)



Listeria Monocytogenes

Specimen Weight: 983.000 mg

Dilution Factor: 1.000

Analyte	Action Level (cfu/g)	Result
Listeria Monocytogenes	1	Absence in 1g

Passed
(qPCR)

Xuelli Gao
Xuelli Gao
Ph.D., DABT
Lab Toxicologist

Aixia Sun
Aixia Sun
D.H.Sc., M.Sc., B.Sc., MT (AAB)
Lab Director/Principal Scientist



Definitions and Abbreviations used in this report: *Total CBD = CBD + (CBD-A * 0.877), *Total THC = THCA-A * 0.877 + Delta 9 THC, *CBG Total = (CBGA * 0.877) + CBG, *CBN Total = (CBNA * 0.877) + CBN, *Other Cannabinoids Total = CBC + CBDV + THCV + THCV-A, *Total Detected Cannabinoids = CBD Total + CBG Total + CBN Total + THC Total + CBC + CBDV + THCV + THCV-A, *Analyte Details above show the Dry Weight Concentrations unless specified as 12% moisture concentration. (mg/ml) = Milligrams per Milliliter, LOQ = Limit of Quantitation, LOD = Limit of Detection, Dilution = Dilution Factor (ppb) = Parts per Billion, (%) = Percent, (cfu/g) = Colony Forming Unit per Gram (cfu/g) = Colony Forming Unit per Gram, LOD = Limit of Detection, (µg/g) = Microgram per Gram (ppm) = Parts per Million, (ppm) = (µg/g), (aw) = aw (area ratio) = Area Ratio, (mg/Kg) = Milligram per Kilogram, *Measurement of Uncertainty = +/- 5%



This report shall not be reproduced, without written approval, from ACS Laboratory. The results of this report relate only to the material or product analyzed. Test results are confidential unless explicitly waived otherwise. Accredited by a third-party accrediting body as a competent testing laboratory pursuant to ISO/IEC 17025 of the International Organization for Standardization.



License No. 800025015
FL License # CMTL-0003
CLIA No. 10D1094068

Certificate of Analysis

Compliance Test

CBD Health Collection
136 N Prospect Street
Granville, OH 43023

Batch # 310212428
Batch Date: 2021-03-10
Extracted From: Hemp

Sampling Method: MSP 7.3.1 Test Reg
State: Florida

Production Facility: Limitless CBD
Production Date: 2021-03-10

Order # LIM210311-020142
Order Date: 2021-03-11
Sample # AAB945

Sampling Date: 2021-03-16
Lab Batch Date: 2021-03-16
Completion Date: 2021-03-22

Initial Gross Weight: 56.889 g

Pathogenic SAE (qPCR)

Specimen Weight: 258.000 mg

Passed
(qPCR)

Dilution Factor: 1.000

Analyte	Action Level (cfu/g)	Result (cfu/g)	Analyte	Action Level (cfu/g)	Result (cfu/g)
Aspergillus (Flavus, Fumigatus, Niger, Terreus)	1	Absence in 1g	E.Coli	1	Absence in 1g
			Salmonella	1	Absence in 1g

Xuelli Gao
Xuelli Gao
Ph.D., DABT
Lab Toxicologist

Aixia Sun
Aixia Sun
D.H.Sc., M.Sc., B.Sc., MT (AAB)
Lab Director/Principal Scientist



Definitions and Abbreviations used in this report: *Total CBD = CBD + (CBD-A * 0.877), *Total THC = THCA-A * 0.877 + Delta 9 THC, *CBG Total = (CBGA * 0.877) + CBG, *CBN Total = (CBNA * 0.877) + CBN, *Other Cannabinoids Total = CBC + CBDV + THCV + THCV-A, *Total Detected Cannabinoids = CBD Total + CBG Total + CBN Total + THC Total + CBC + CBDV + THCV + THCV-A, *Analyte Details above show the Dry Weight Concentrations unless specified as 12% moisture concentration.
(mg/ml) = Milligrams per Milliliter, LOQ = Limit of Quantitation, LOD = Limit of Detection, Dilution = Dilution Factor (ppb) = Parts per Billion, (%) = Percent, (cfu/g) = Colony Forming Unit per Gram (cfu/g) = Colony Forming Unit per Gram, LOD = Limit of Detection, (µg/g) = Microgram per Gram (ppm) = Parts per Million, (ppm) = (µg/g), (aw) = aw (area ratio) = Area Ratio, (mg/Kg) = Milligram per Kilogram, *Measurement of Uncertainty = +/- 5%



This report shall not be reproduced, without written approval, from ACS Laboratory. The results of this report relate only to the material or product analyzed. Test results are confidential unless explicitly waived otherwise. Accredited by a third-party accrediting body as a competent testing laboratory pursuant to ISO/IEC 17025 of the International Organization for Standardization.



License No. 800025015
FL License # CMTL-0003
CLIA No. 10D1094068

Certificate of Analysis

Compliance Test

CBD Health Collection
136 N Prospect Street
Granville, OH 43023

Batch # 310212428
Batch Date: 2021-03-10
Extracted From: Hemp

Sampling Method: MSP 7.3.1 Test Reg
State: Florida

Production Facility: Limitless CBD
Production Date: 2021-03-10

Order # LJM210311-020142
Order Date: 2021-03-11
Sample # AAB8945

Sampling Date: 2021-03-16
Lab Batch Date: 2021-03-16
Completion Date: 2021-03-22

Initial Gross Weight: 56.889 g



Residual Solvents - FL (CBD)

Specimen Weight: 9.000 mg

Dilution Factor: 1.000

Analyte	LOQ (ppm)	Action Level (ppm)	Result (ppm)	Analyte	LOQ (ppm)	Action Level (ppm)	Result (ppm)
1,1-Dichloroethene	0.16	8	<LOQ	1,2-Dichloroethane	0.04	5	<LOQ
Acetone	2.08	5000	<LOQ	Acetonitrile	1.17	410	<LOQ
Benzene	0.02	2	<LOQ	Butanes	2.5	2000	<LOQ
Chloroform	0.04	60	<LOQ	Ethanol	2.78	5000	<LOQ
Ethyl Acetate	1.11	5000	<LOQ	Ethyl Ether	1.39	5000	<LOQ
Ethylene Oxide	0.1	5	<LOQ	Heptane	1.39	5000	<LOQ
Hexane	1.17	290	<LOQ	Isopropyl alcohol	1.39	500	<LOQ
Methanol	0.69	3000	<LOQ	Methylene chloride	2.43	600	<LOQ
Pentane	2.08	5000	<LOQ	Propane	5.83	2100	<LOQ
Toluene	2.92	890	<LOQ	Total Xylenes	2.92	2170	<LOQ
Trichloroethylene	0.49	80	<LOQ				

Passed
(GCMS)



Listeria Monocytogenes

Specimen Weight: 983.000 mg

Dilution Factor: 1.000

Analyte	Action Level (cfu/g)	Result
Listeria Monocytogenes	1	Absence in 1g

Passed
(qPCR)

Xueli Gao
Xueli Gao
Ph.D., DABT
Lab Toxicologist

Aixia Sun
Aixia Sun
D.H.Sc., M.Sc., B.Sc., MT (AAB)
Lab Director/Principal Scientist



Definitions and Abbreviations used in this report: *Total CBD = CBD + (CBD-A * 0.877), *Total THC = THCA-A * 0.877 + Delta 9 THC, *CBG Total = (CBGA * 0.877) + CBG, *CBN Total = (CBNA * 0.877) + CBN, *Other Cannabinoids Total = CBC + CBDV + THCV + THCV-A, *Total Detected Cannabinoids = CBD Total + CBG Total + CBN Total + THC Total + CBC + CBDV + THCV + THCV-A, *Analyte Details above show the Dry Weight Concentrations unless specified as 12% moisture concentration. (mg/ml) = Milligrams per Milliliter, LOQ = Limit of Quantitation, LOD = Limit of Detection, Dilution = Dilution Factor (ppb) = Parts per Billion, (%) = Percent, (cfu/g) = Colony Forming Unit per Gram (cfu/g) = Colony Forming Unit per Gram, LOD = Limit of Detection, (µg/g) = Microgram per Gram (ppm) = Parts per Million, (ppm) = (µg/g), (aw) = aw (area ratio) = Area Ratio, (mg/Kg) = Milligram per Kilogram, *Measurement of Uncertainty = +/- 5%

This report shall not be reproduced, without written approval, from ACS Laboratory. The results of this report relate only to the material or product analyzed. Test results are confidential unless explicitly waived otherwise. Accredited by a third-party accrediting body as a competent testing laboratory pursuant to ISO/IEC 17025 of the International Organization for Standardization.





License No. 800025015
FL License # CMTL-0003
CLIA No. 10D1094068

Certificate of Analysis

Compliance Test

CBD Health Collection
136 N Prospect Street
Granville, OH 43023

Batch # 310212428
Batch Date: 2021-03-10
Extracted From: Hemp

Sampling Method: MSP 7.3.1 Test Reg
State: Florida

Production Facility: Limitless CBD
Production Date: 2021-03-10

Order # LIM210311-020142
Order Date: 2021-03-11
Sample # AAB945

Sampling Date: 2021-03-16
Lab Batch Date: 2021-03-16
Completion Date: 2021-03-22

Initial Gross Weight: 56.889 g

Pathogenic SAE (qPCR)

Specimen Weight: 258.000 mg

Passed
(qPCR)

Dilution Factor: 1.000

Analyte	Action Level (cfu/g)	Result (cfu/g)	Analyte	Action Level (cfu/g)	Result (cfu/g)
Aspergillus (Flavus, Fumigatus, Niger, Terreus)	1	Absence in 1g	E.Coli	1	Absence in 1g
			Salmonella	1	Absence in 1g

Xuelli Gao
Xuelli Gao
Ph.D., DABT
Lab Toxicologist

Aixia Sun
Aixia Sun
D.H.Sc., M.Sc., B.Sc., MT (AAB)
Lab Director/Principal Scientist



Definitions and Abbreviations used in this report: *Total CBD = CBD + (CBD-A * 0.877), *Total THC = THCA-A * 0.877 + Delta 9 THC, *CBG Total = (CBGA * 0.877) + CBG, *CBN Total = (CBNA * 0.877) + CBN, *Other Cannabinoids Total = CBC + CBDV + THCV + THCV-A, *Total Detected Cannabinoids = CBD Total + CBG Total + CBN Total + THC Total + CBC + CBDV + THCV + THCV-A, *Analyte Details above show the Dry Weight Concentrations unless specified as 12% moisture concentration. (mg/ml) = Milligrams per Milliliter, LOQ = Limit of Quantitation, LOD = Limit of Detection, Dilution = Dilution Factor (ppb) = Parts per Billion, (%) = Percent, (cfu/g) = Colony Forming Unit per Gram (cfu/g) = Colony Forming Unit per Gram, LOD = Limit of Detection, (µg/g) = Microgram per Gram (ppm) = Parts per Million, (ppm) = (µg/g), (aw) = aw (area ratio) = Area Ratio, (mg/Kg) = Milligram per Kilogram, *Measurement of Uncertainty = +/- 5%



This report shall not be reproduced, without written approval, from ACS Laboratory. The results of this report relate only to the material or product analyzed. Test results are confidential unless explicitly waived otherwise. Accredited by a third-party accrediting body as a competent testing laboratory pursuant to ISO/IEC 17025 of the International Organization for Standardization.